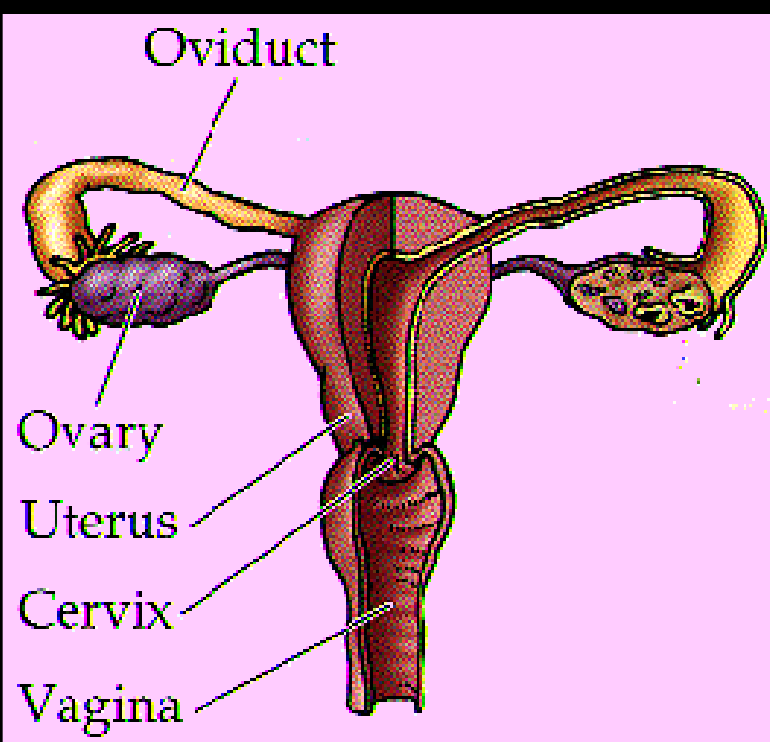
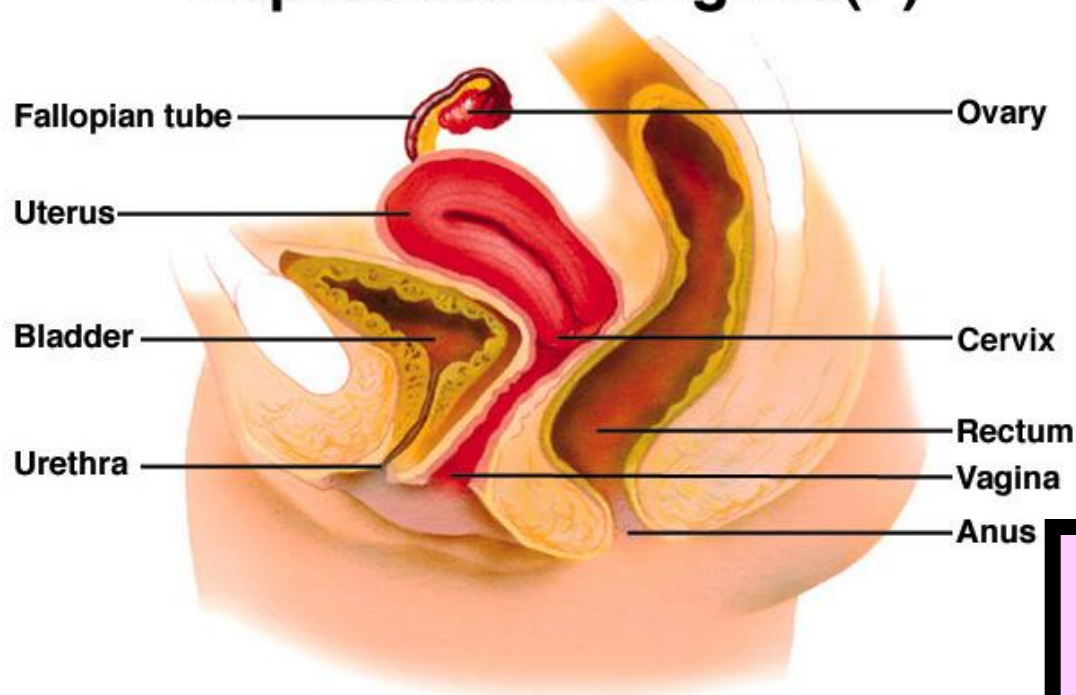


# KADIN GENİTAL SİSTEMİ

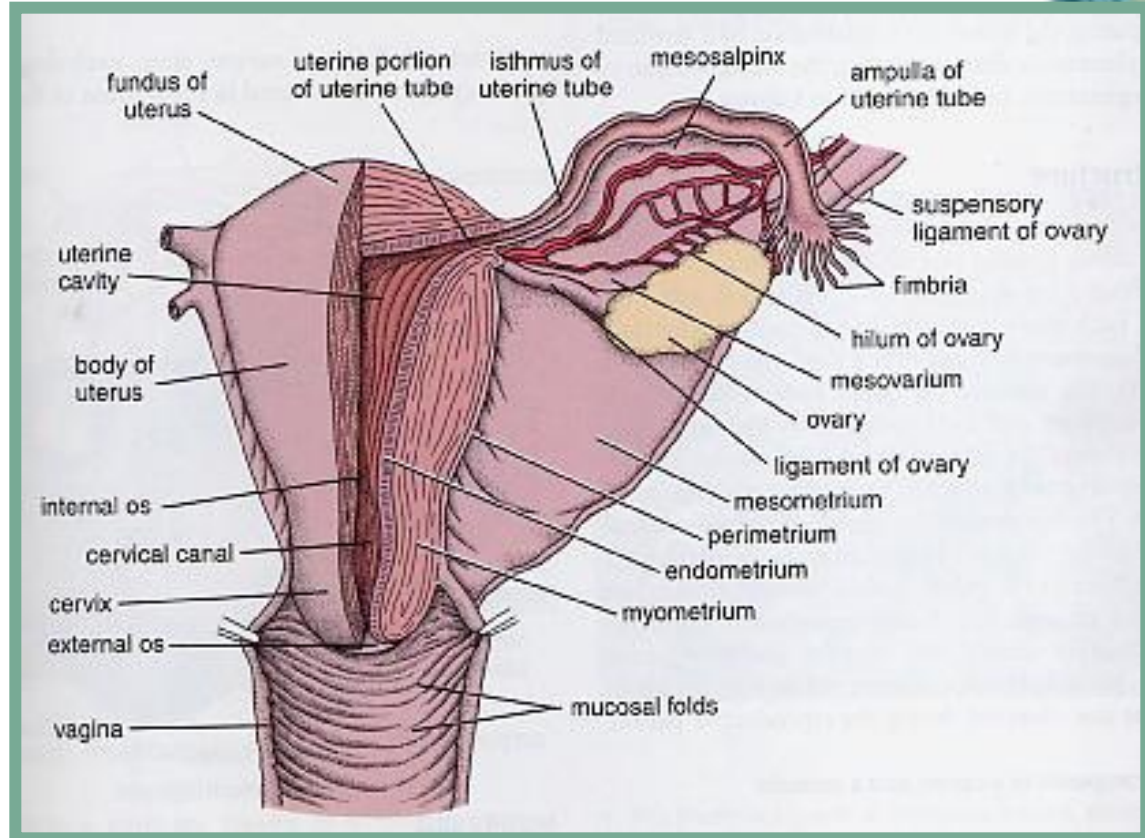
# Internal Sexual & Reproductive Organs(F)



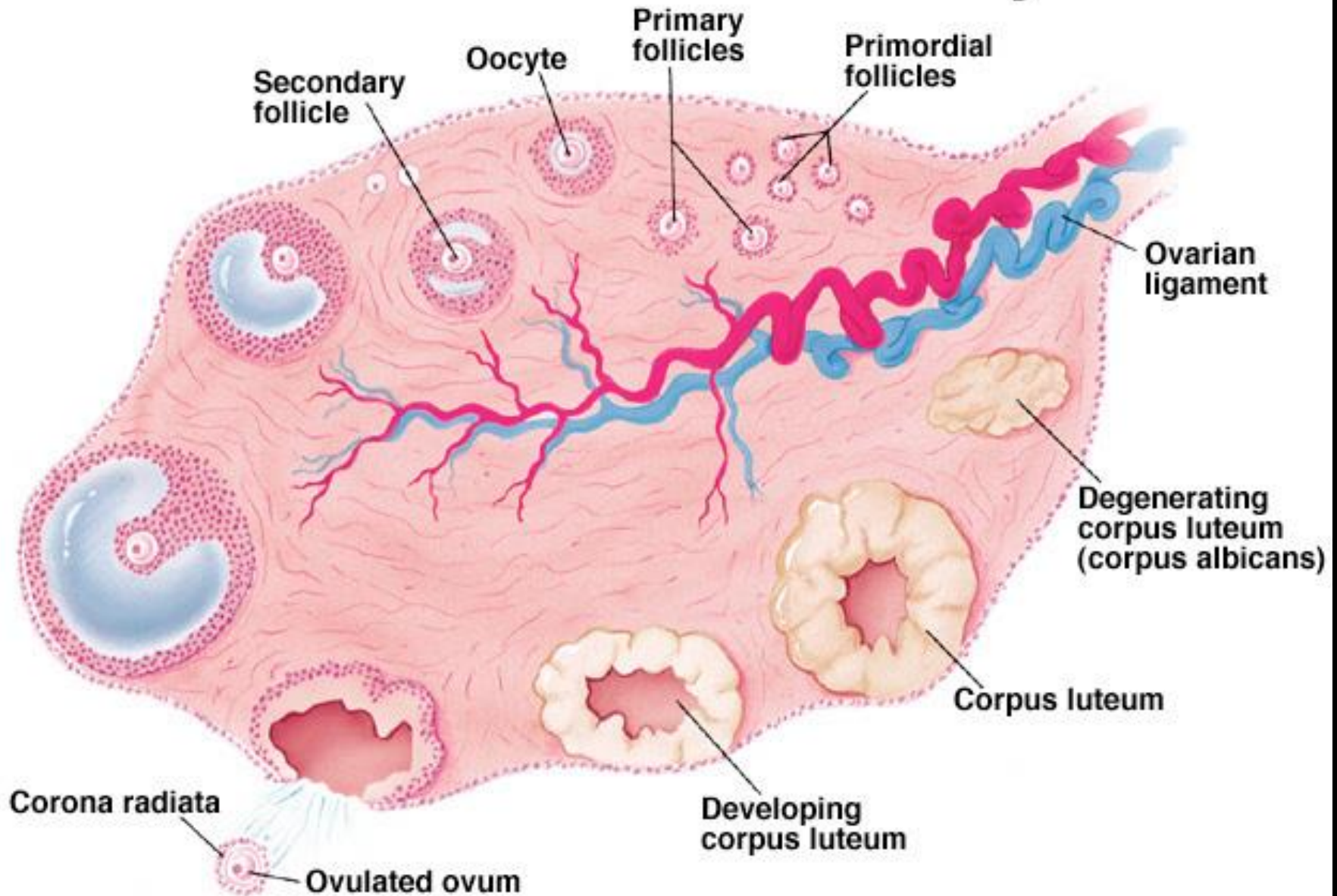
# Tuba uterina

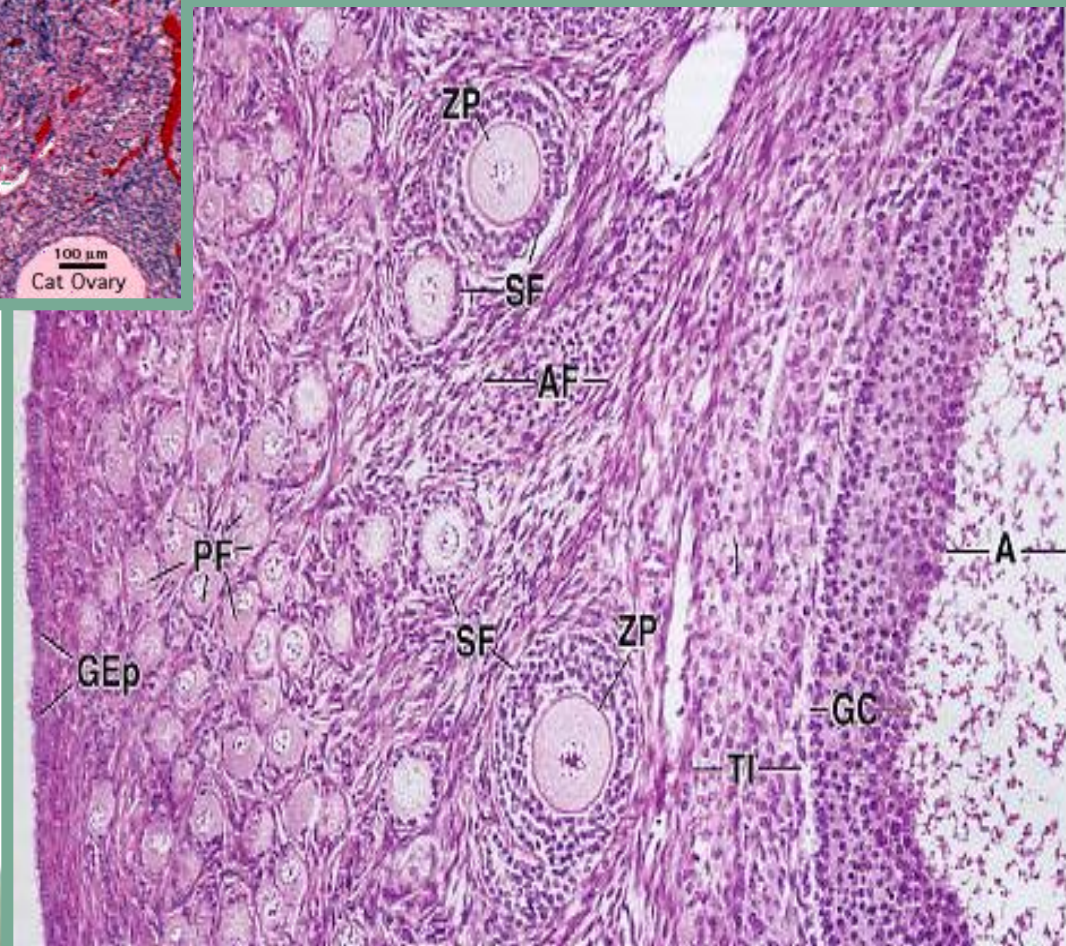
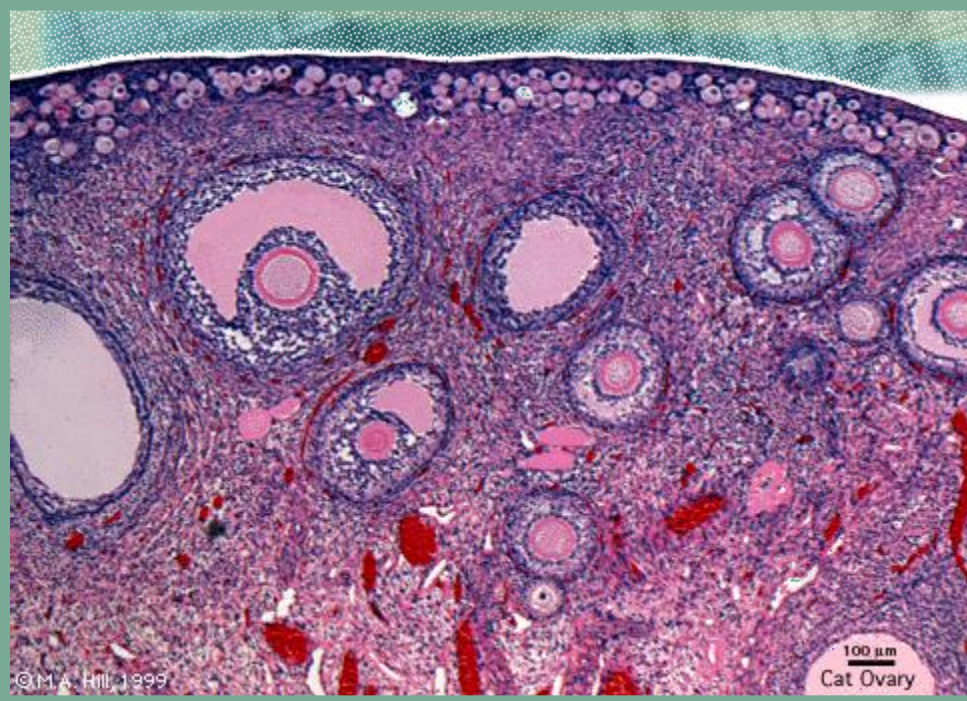
Dört kısımdan oluşur:

1. Infundibulum
2. Ampulla
3. Isthmus
4. Intramural

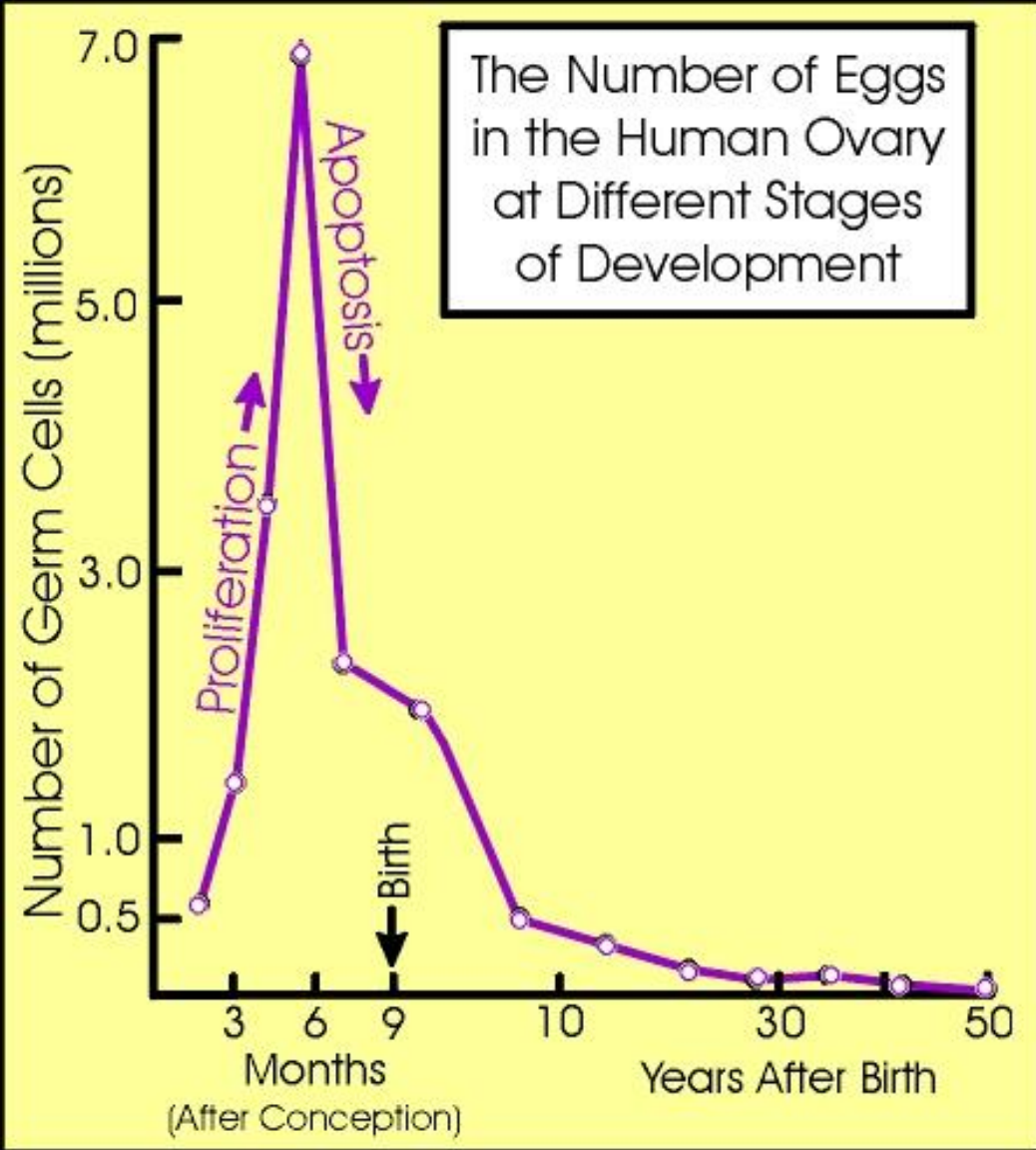


# Structure of an Ovary

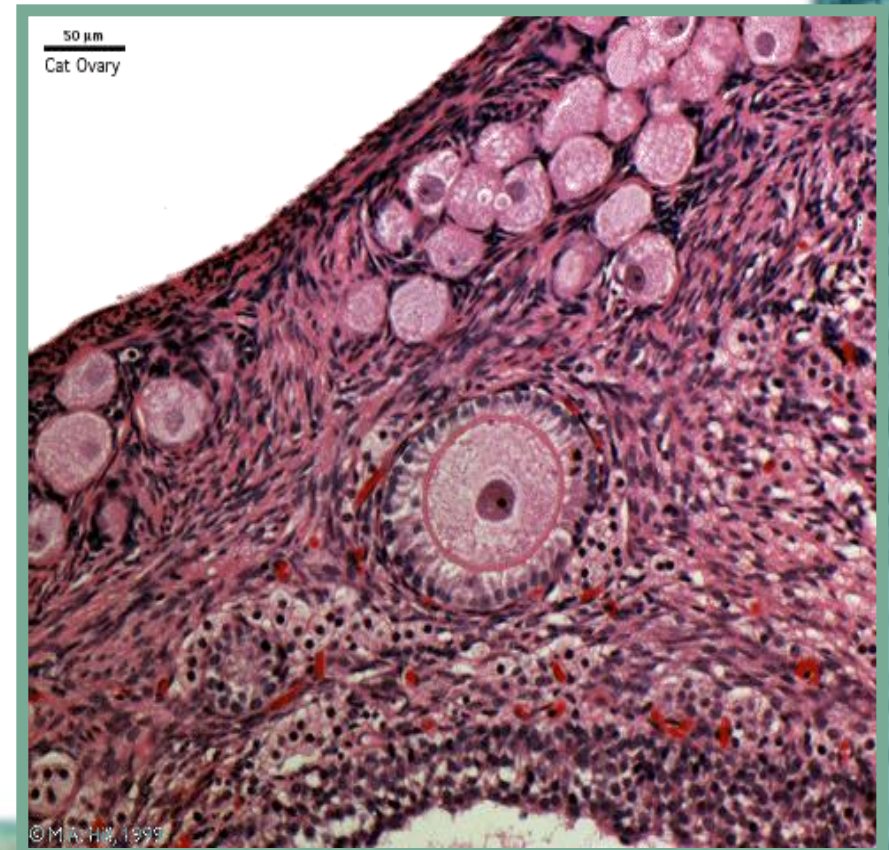
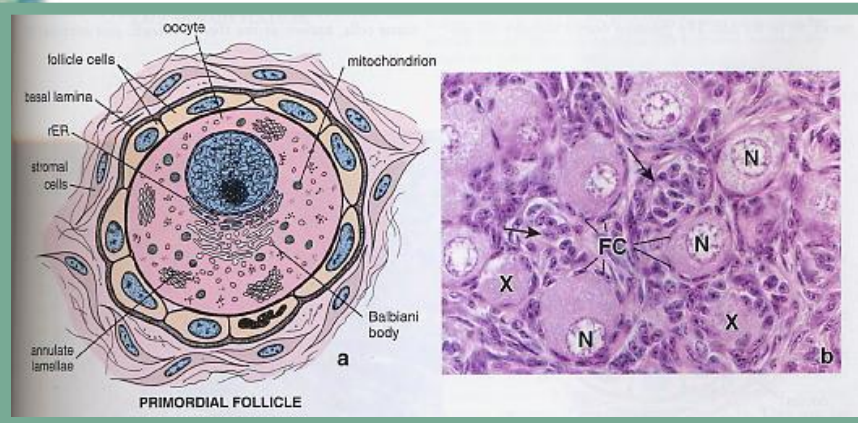




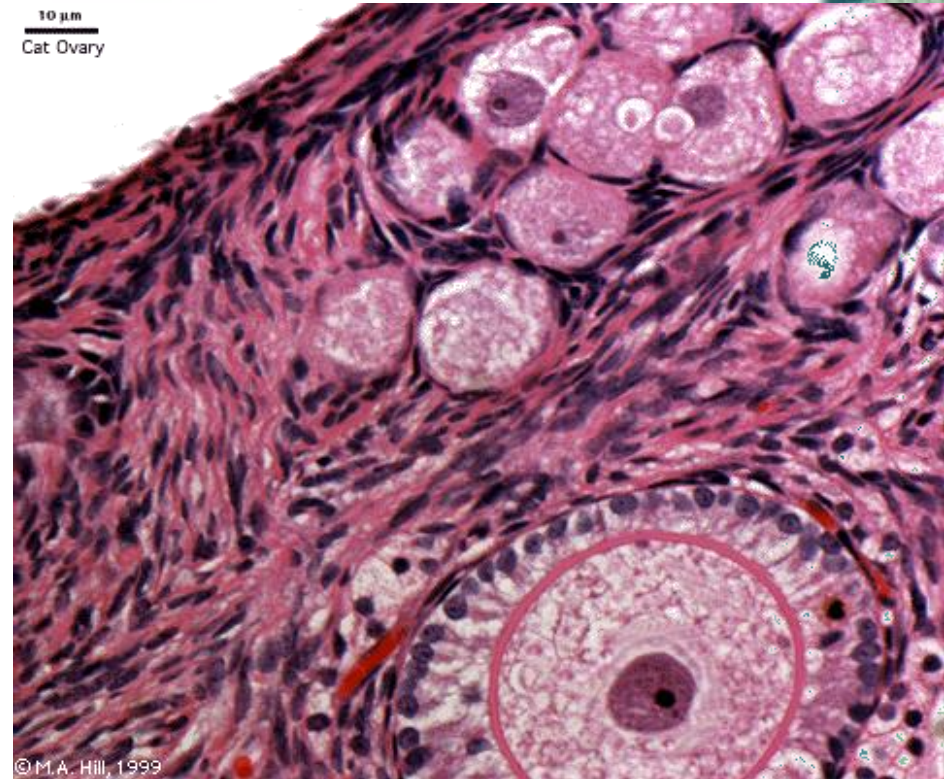
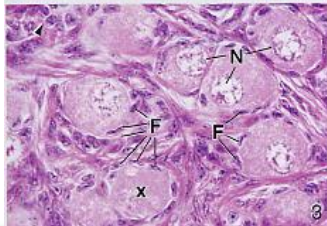
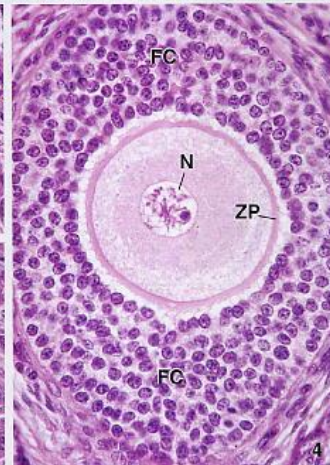
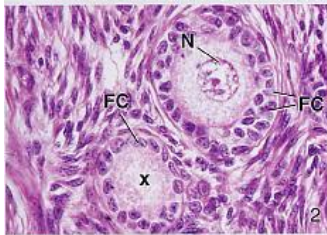
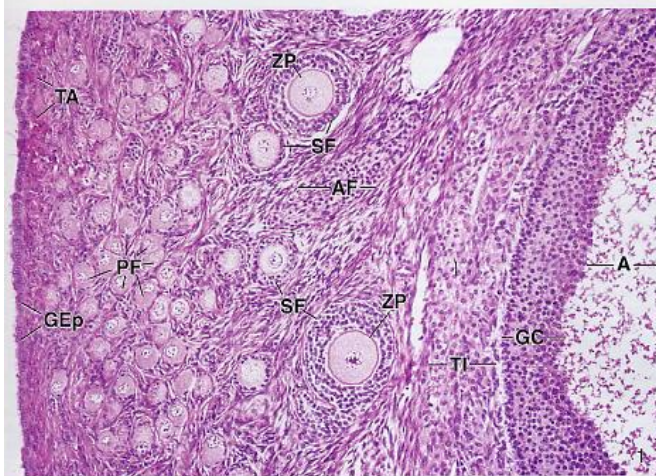
The Number of Eggs in the Human Ovary at Different Stages of Development



# Primordial Follikül



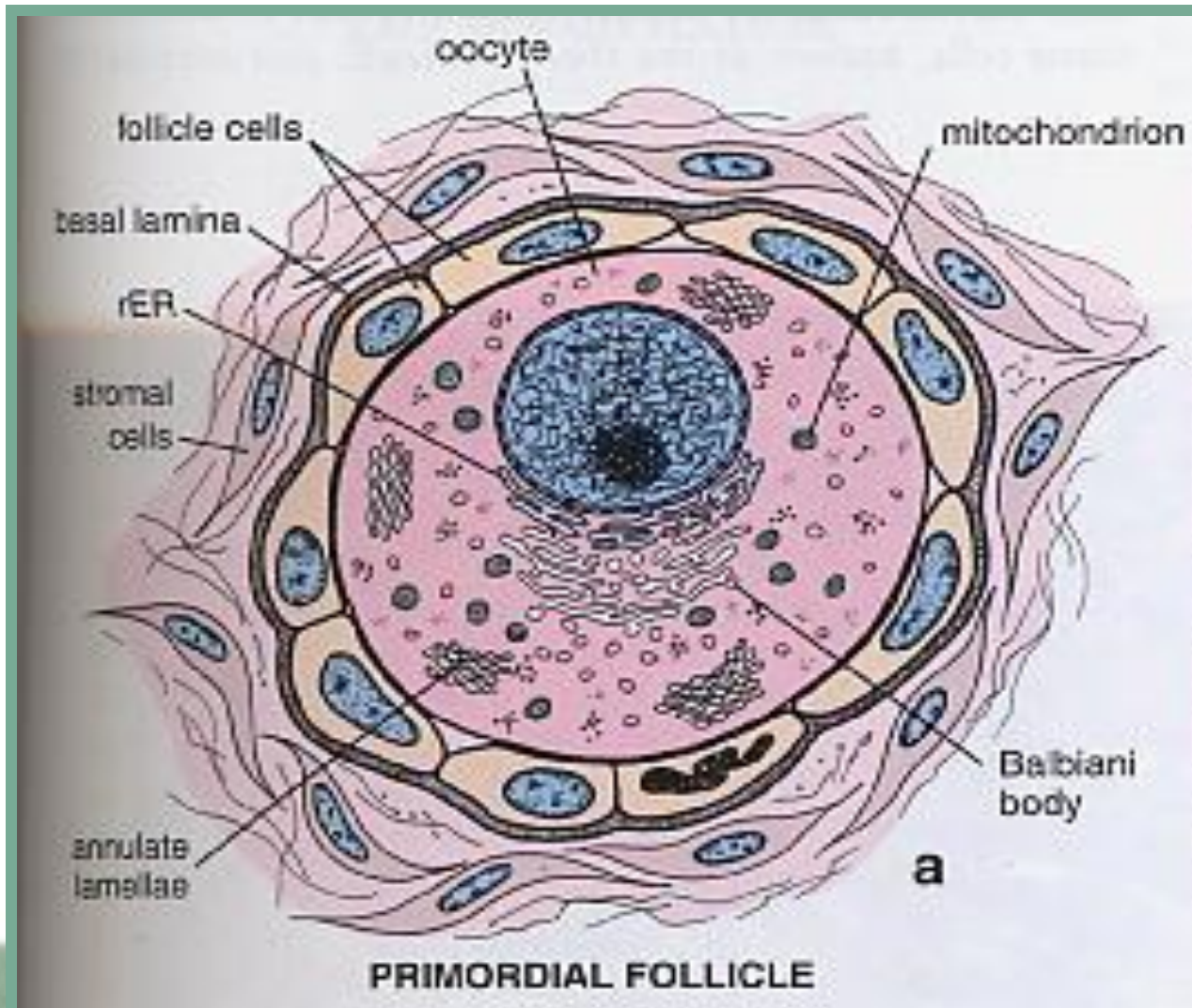
10  $\mu$ m  
Cat Ovary



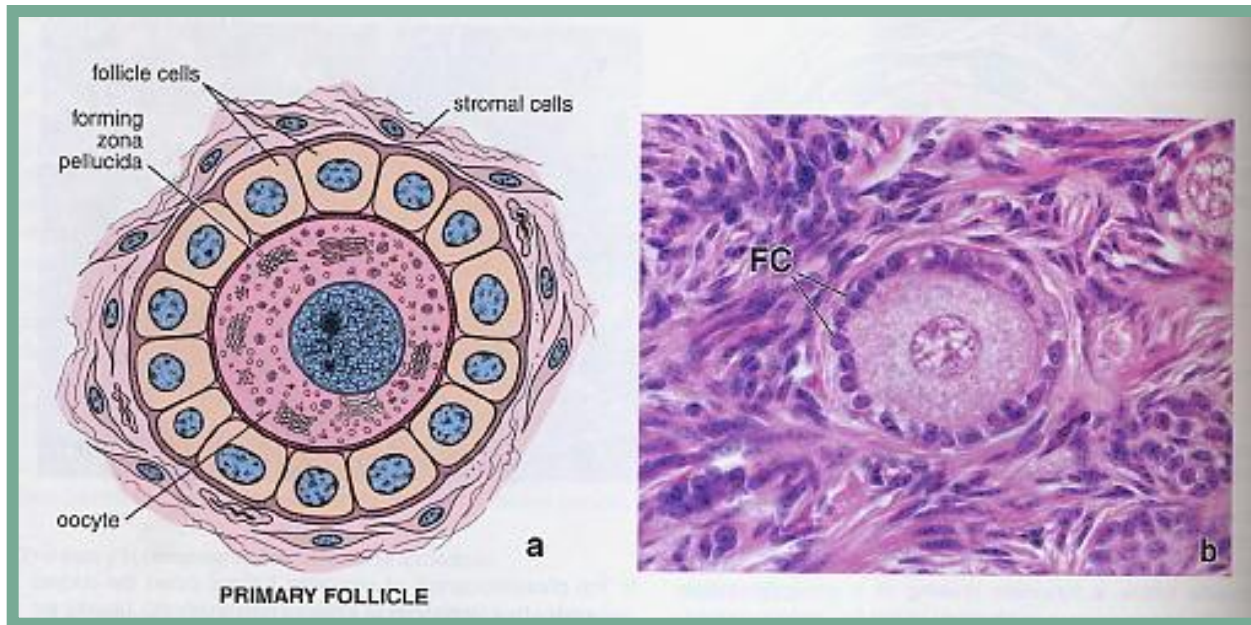
© M.A. Hill, 1999

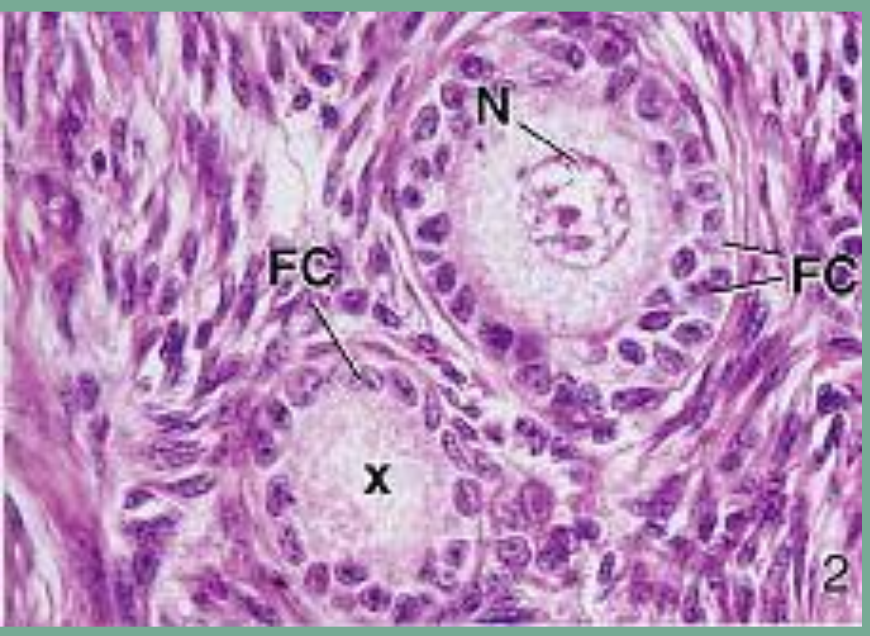


# Primordial follicül



# Primer follikül



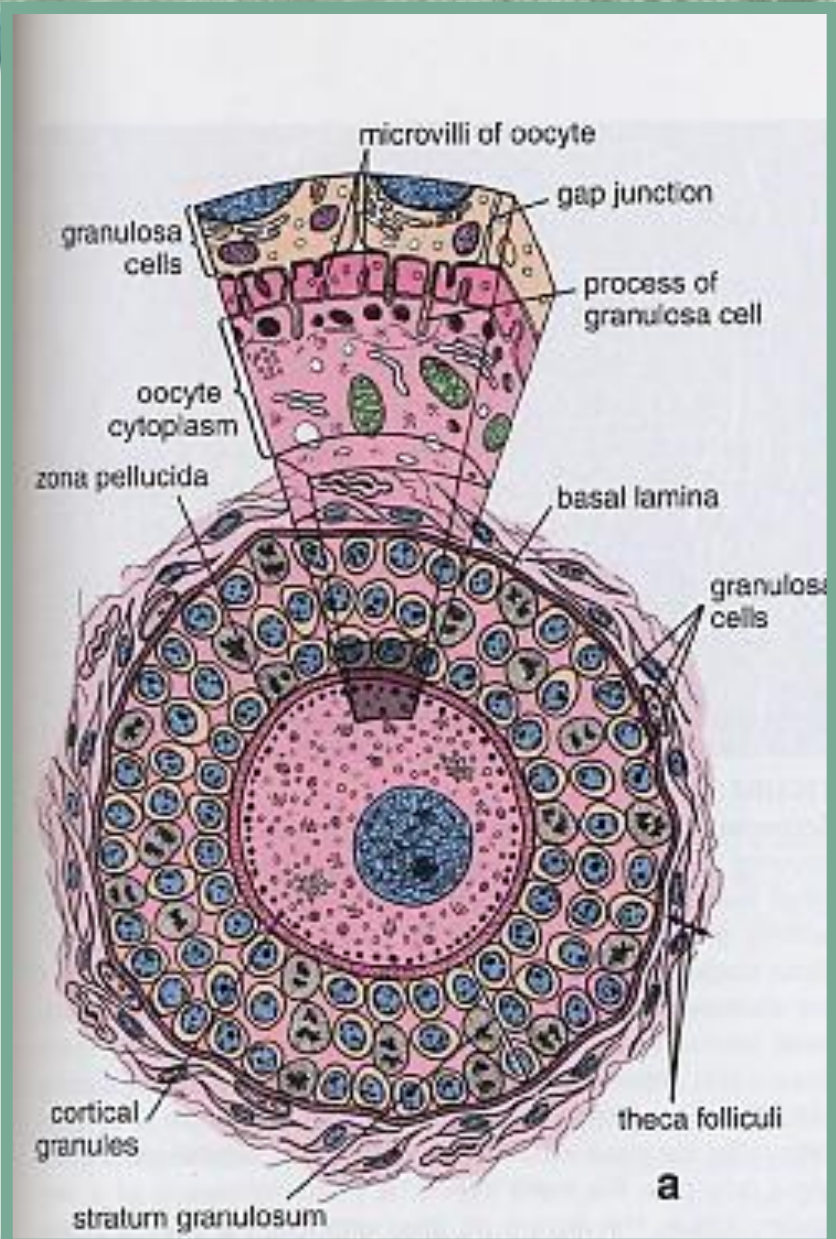
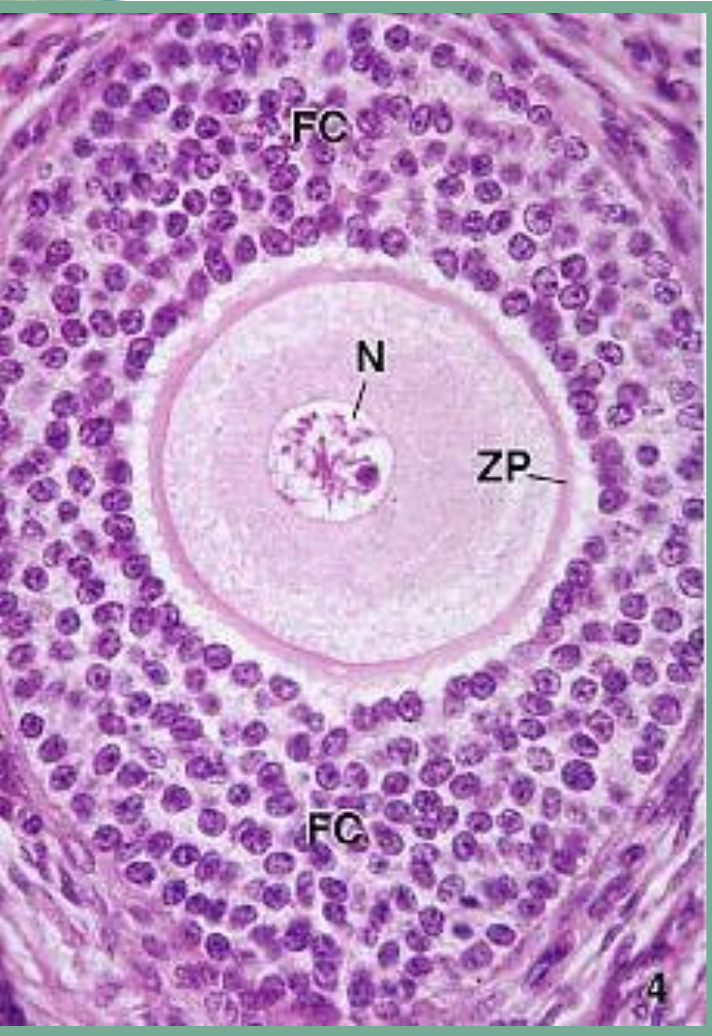


- Tek katlı PF



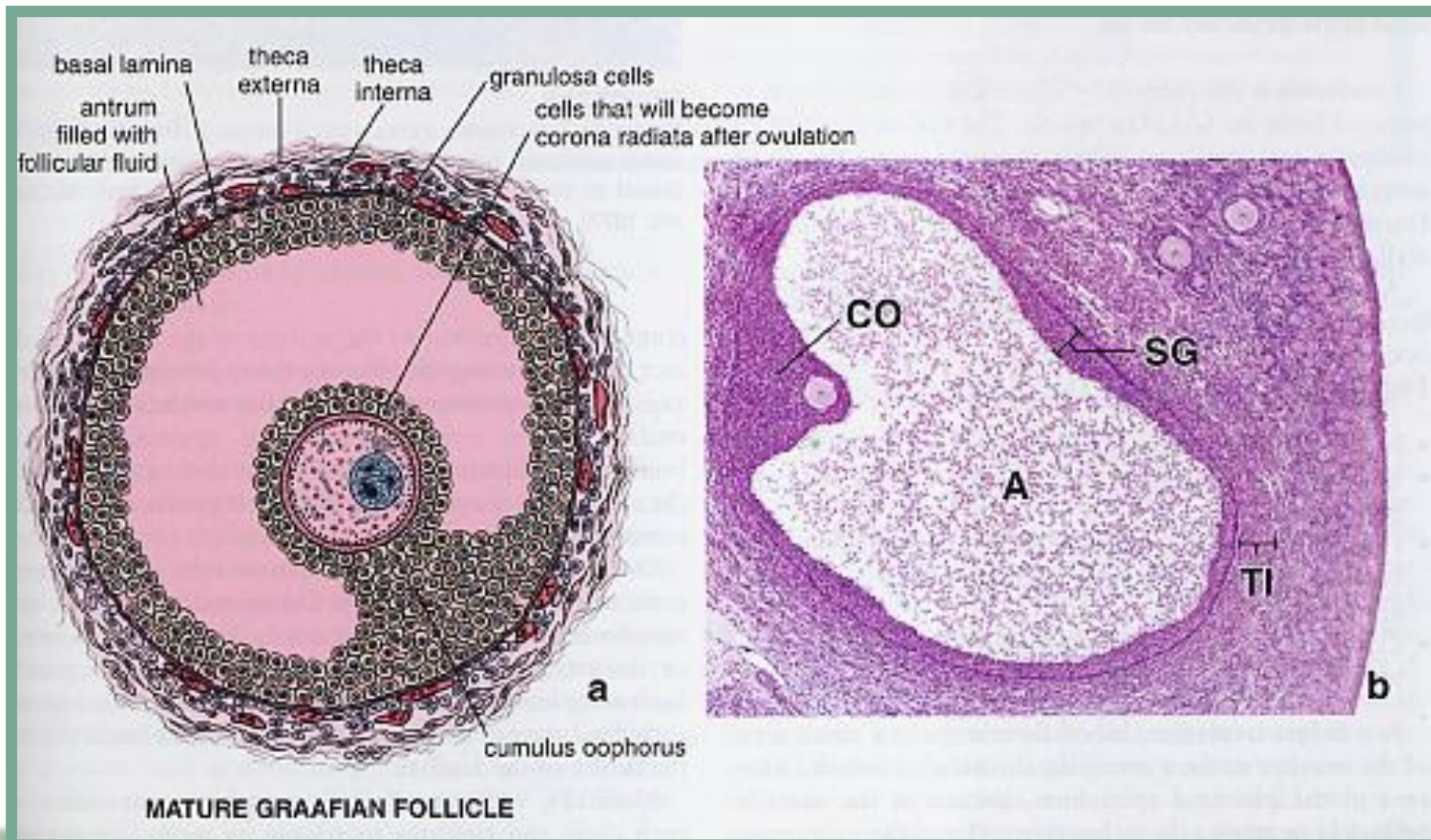
- Çok katlı PF

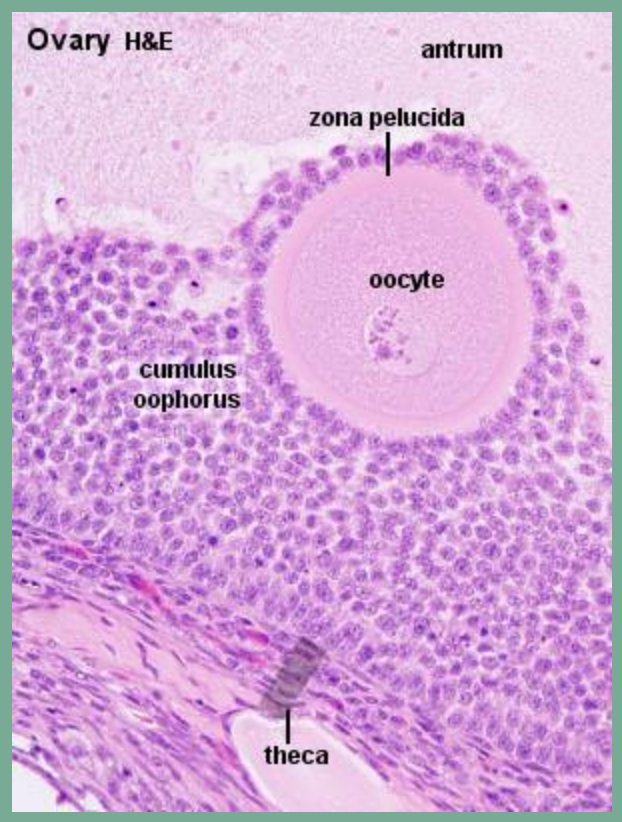




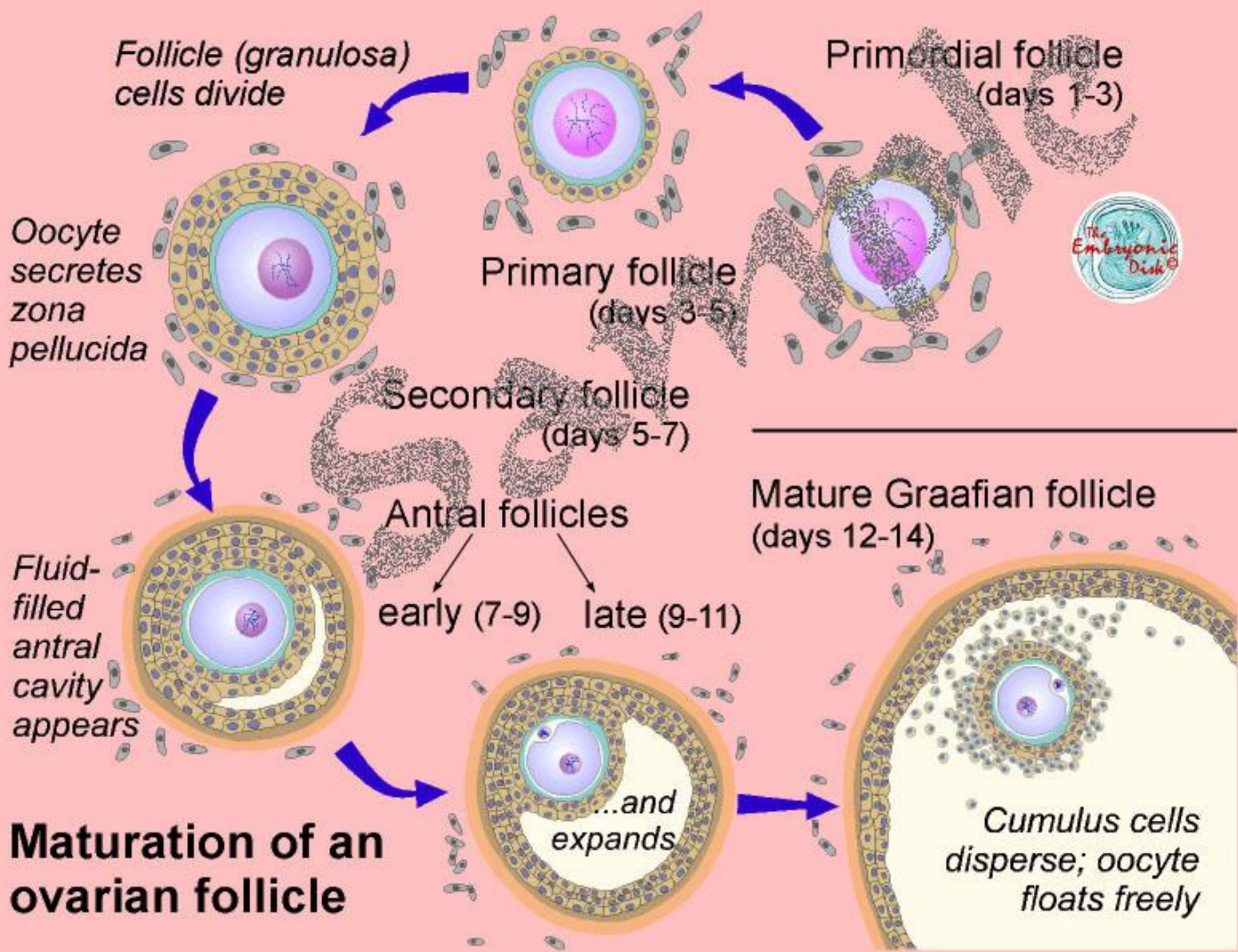


# Olgun (tertiary, preovulatör, Graf) follikül









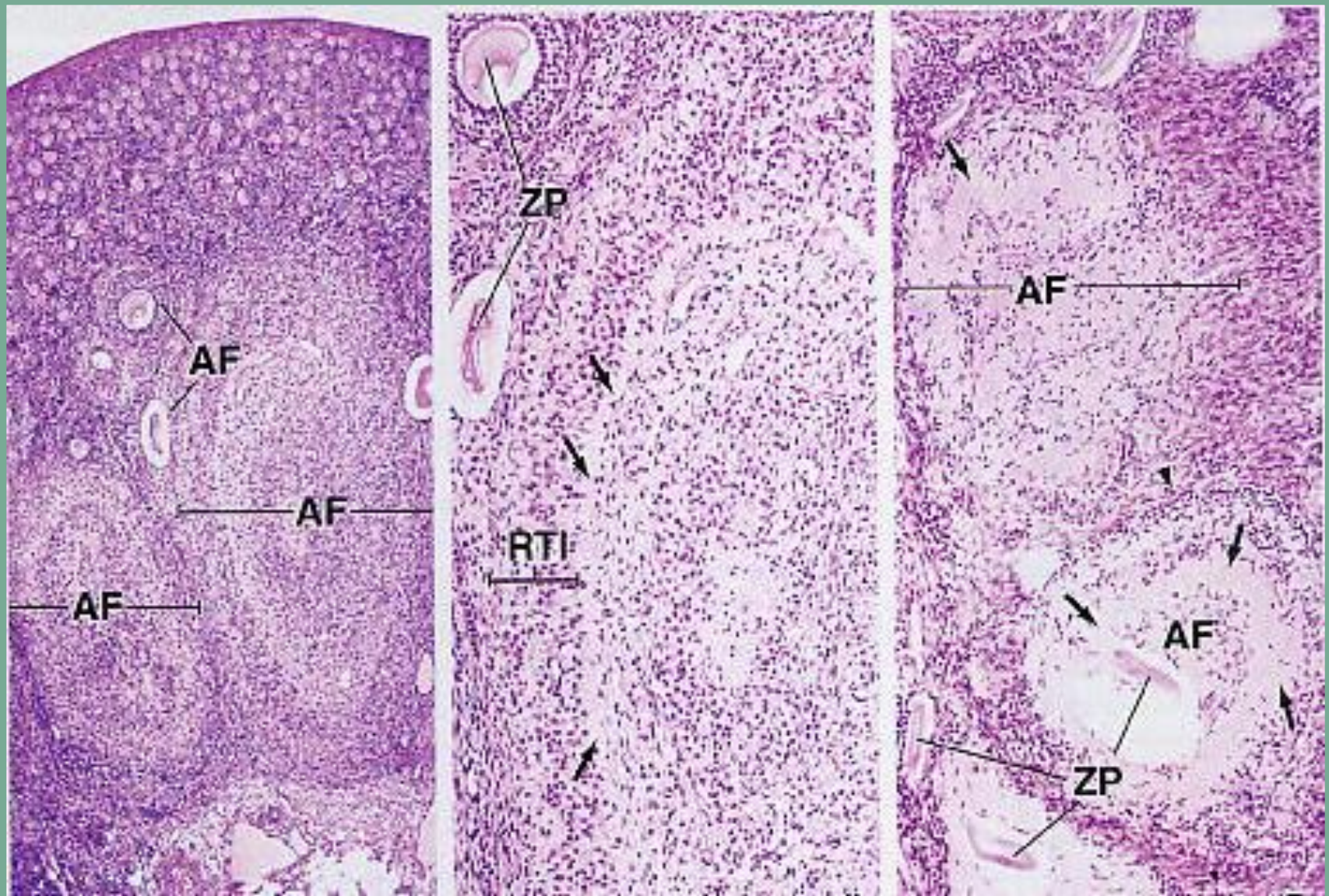
Folikül sıvısı, follikül hücreleri tarafından salgılanır

Glikozaminoglikanlar

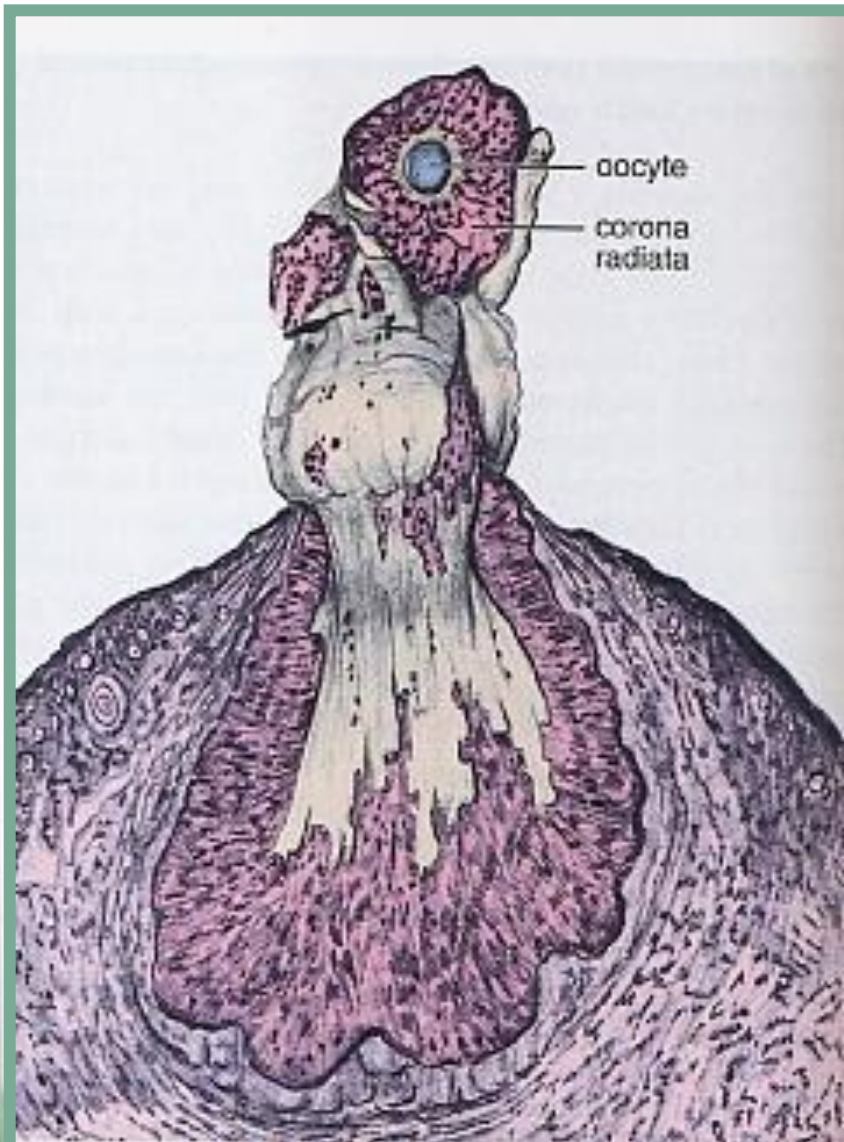
Proteinler (Steroid bağlayıcı proteinler de dahil olmak üzere)

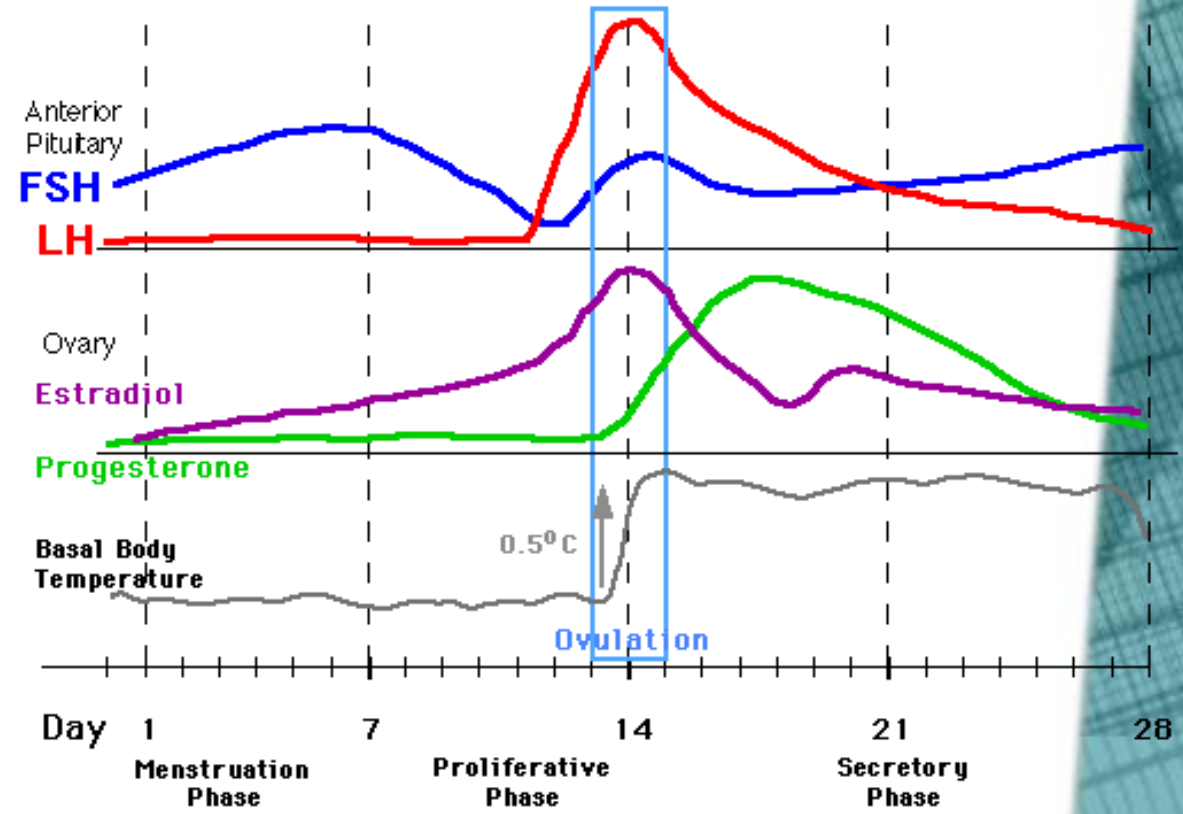
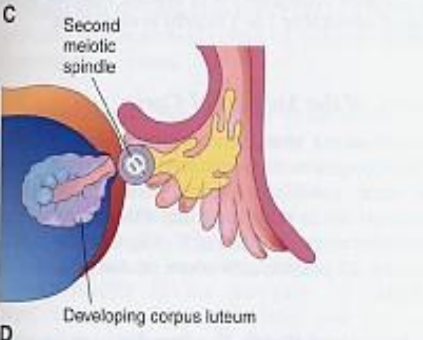
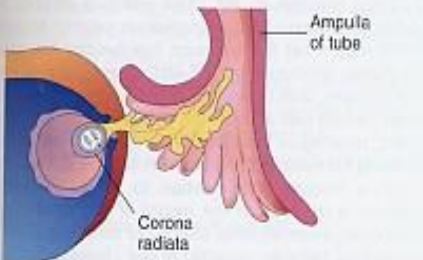
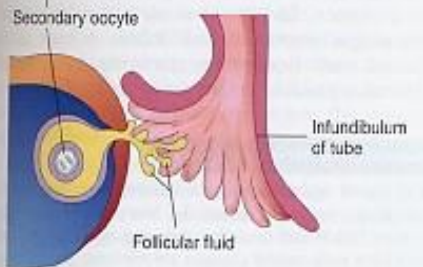
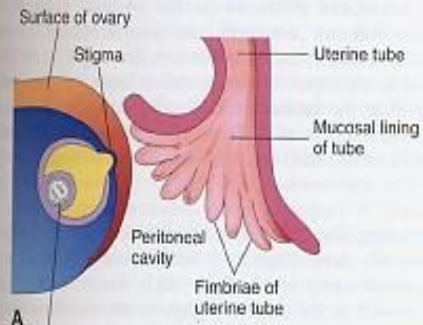
Steroidler (Östrojen ve progesteron)

# Atrezik follikül

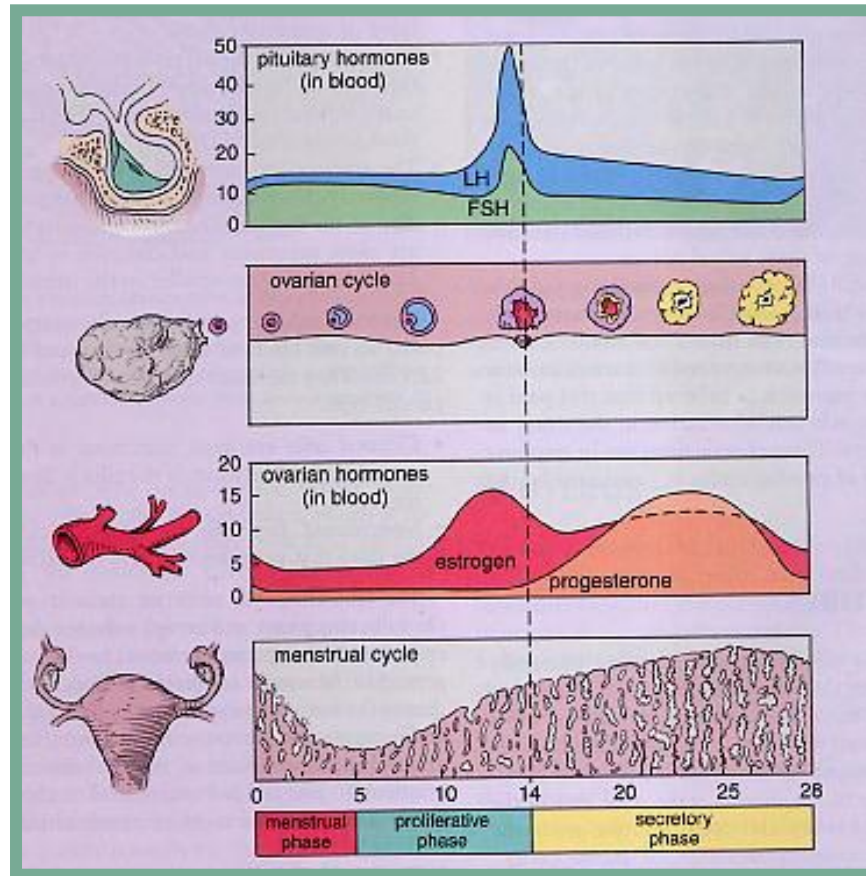


# Ovulasyon





# Menstrüel Siklus



# Hypothalamus- Pituitary-Gonad Feedback Loop(F)

Hypothalamus

Pituitary gland

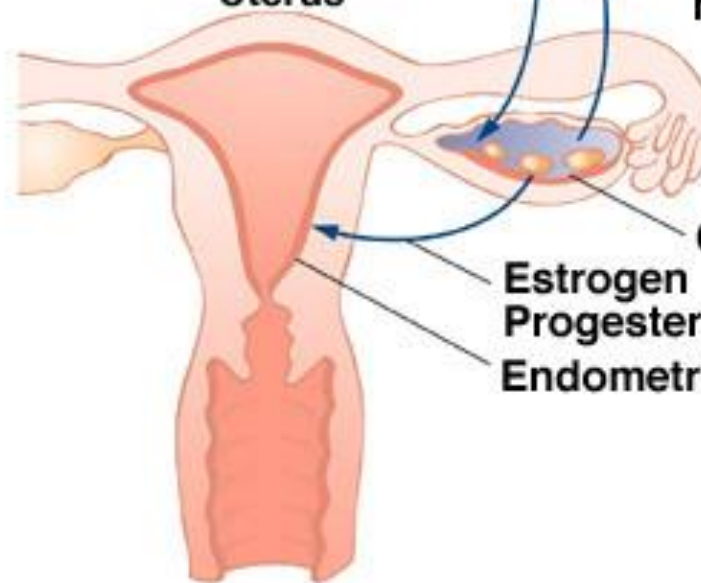
FSH and LH

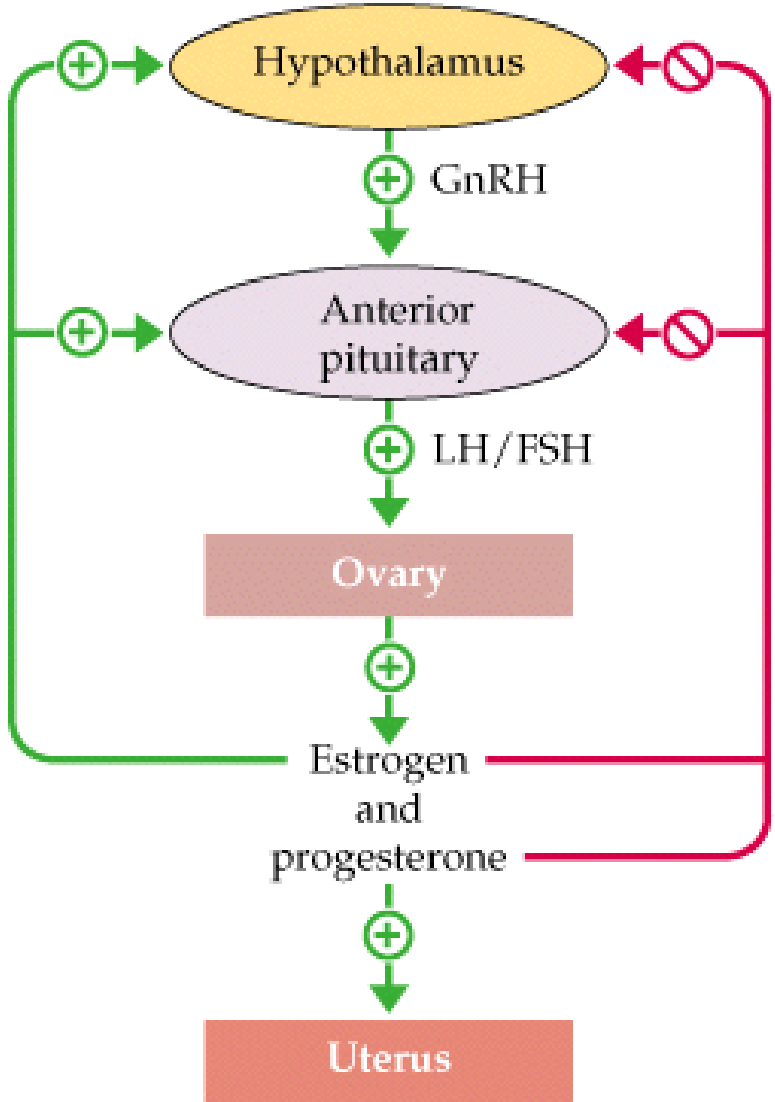
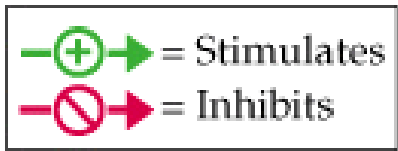
Estrogen and  
progesterone  
negative feedback

Uterus

Ovary

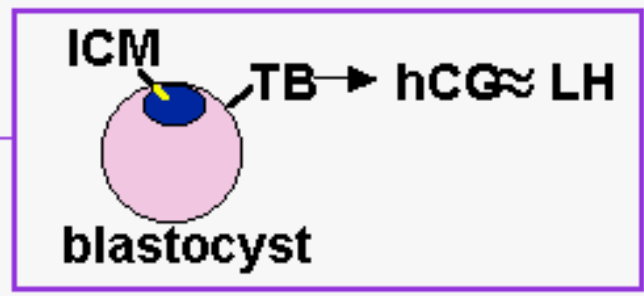
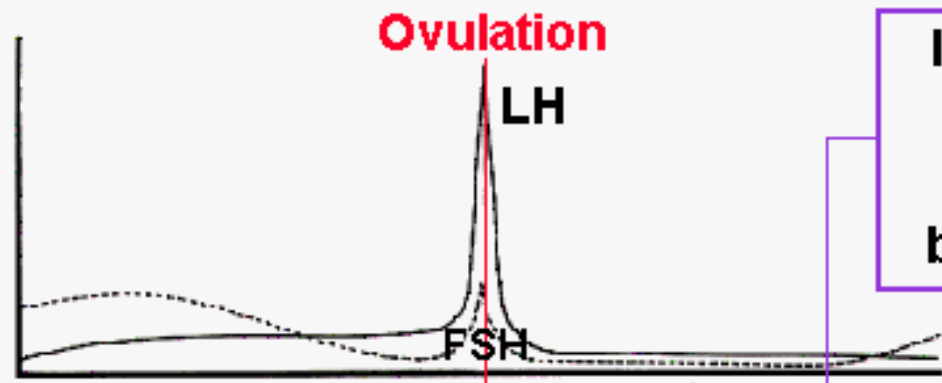
Estrogen  
Progesterone  
Endometrium



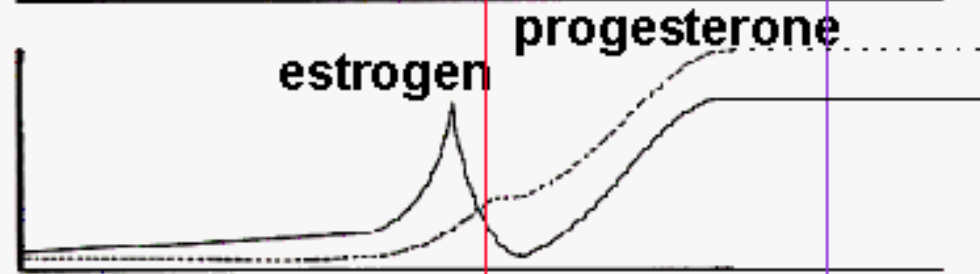




pituitary gonadotrophin cycle



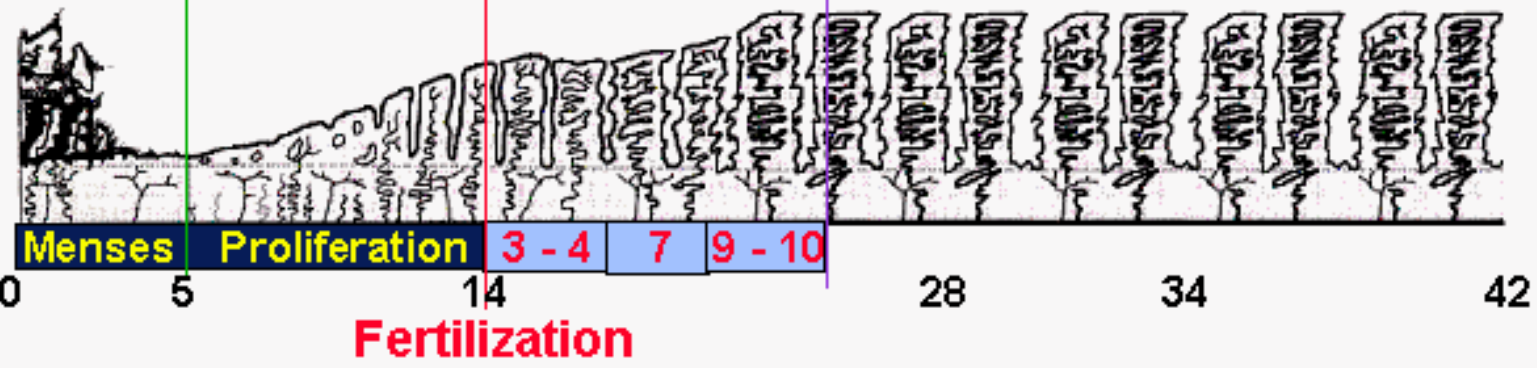
ovarian hormone cycle



ovarian cycle



menstrual cycle



# Human Follicle Development

## Follicular Status

## Stage & Events

No Follicle



Oogonium  
Fetus ↓ Mitosis

Primordial Follicle



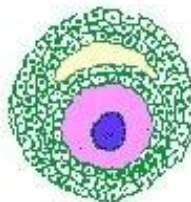
Primary Oocyte  
at Birth or Before ↓ Meiosis begins

Primary Follicle



Primary Oocyte  
After Birth ↓ Meiotic Arrest (Diplotene)

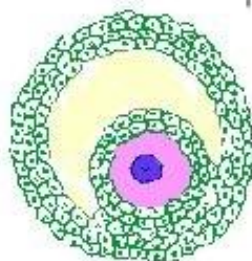
Secondary Follicle



Primary Oocyte

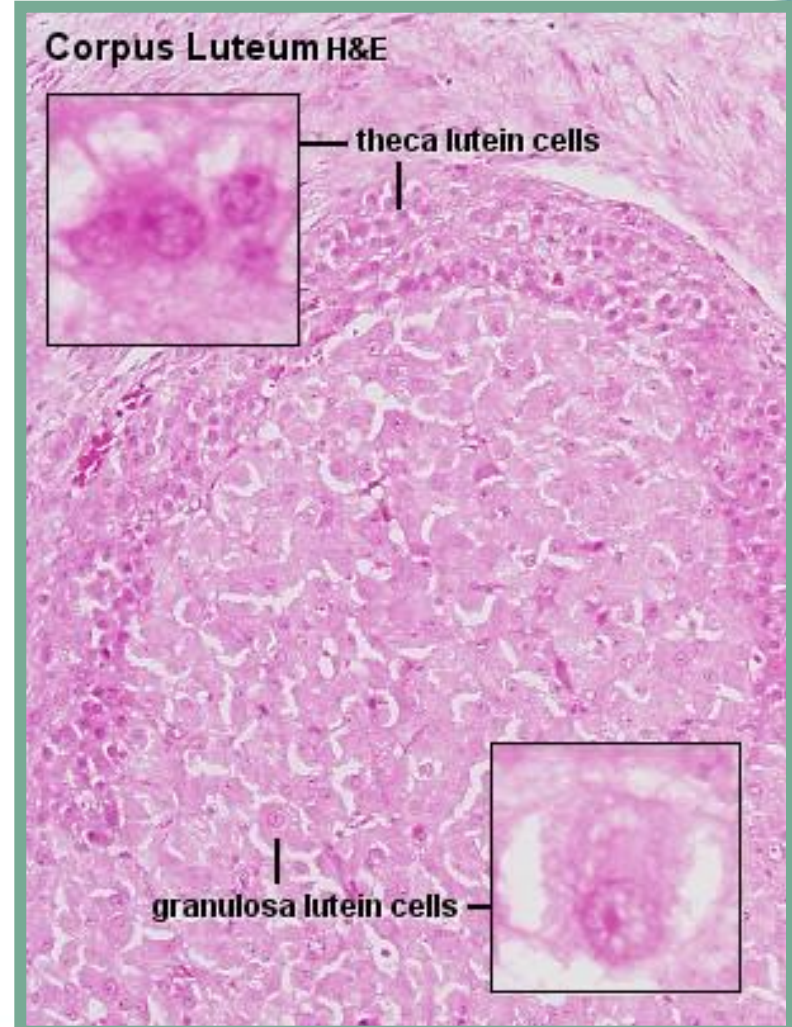
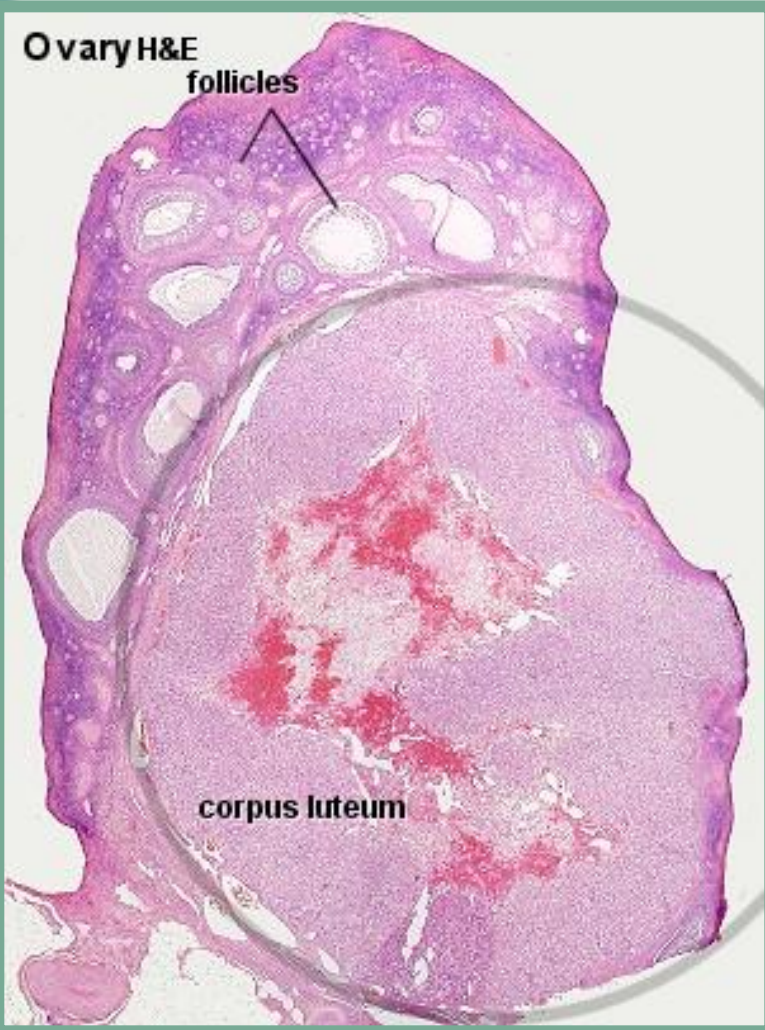
After Puberty ↓ Start Meiosis II

Tertiary Follicle

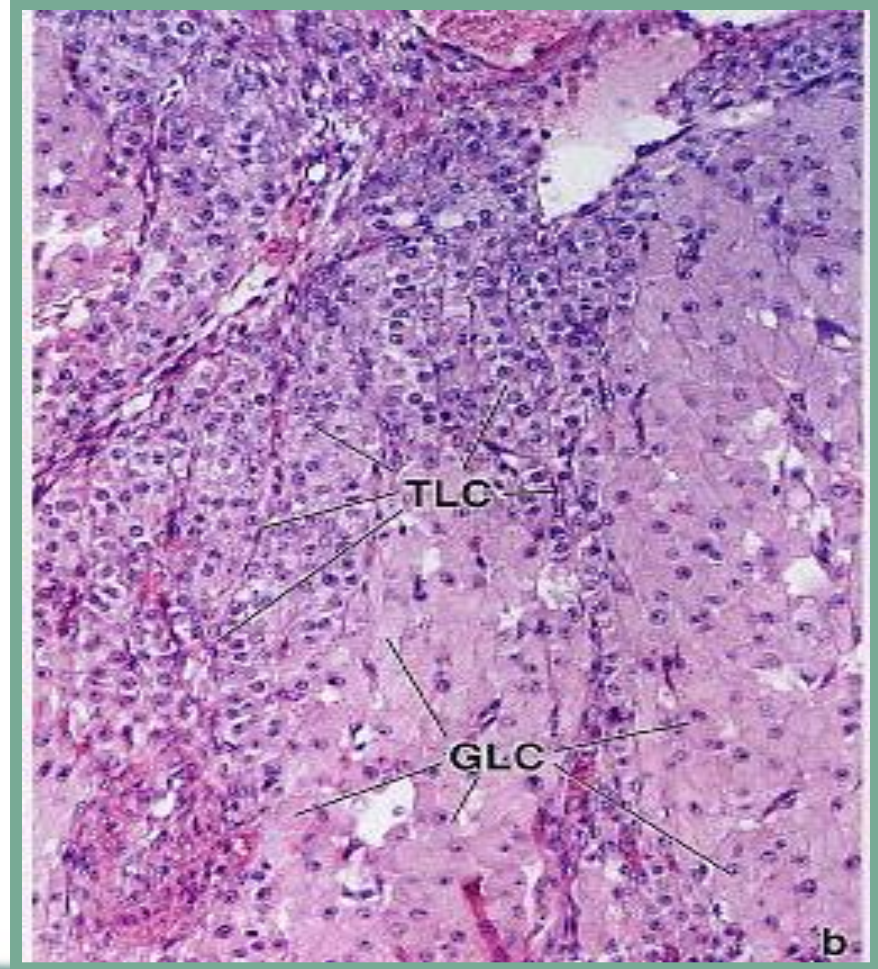
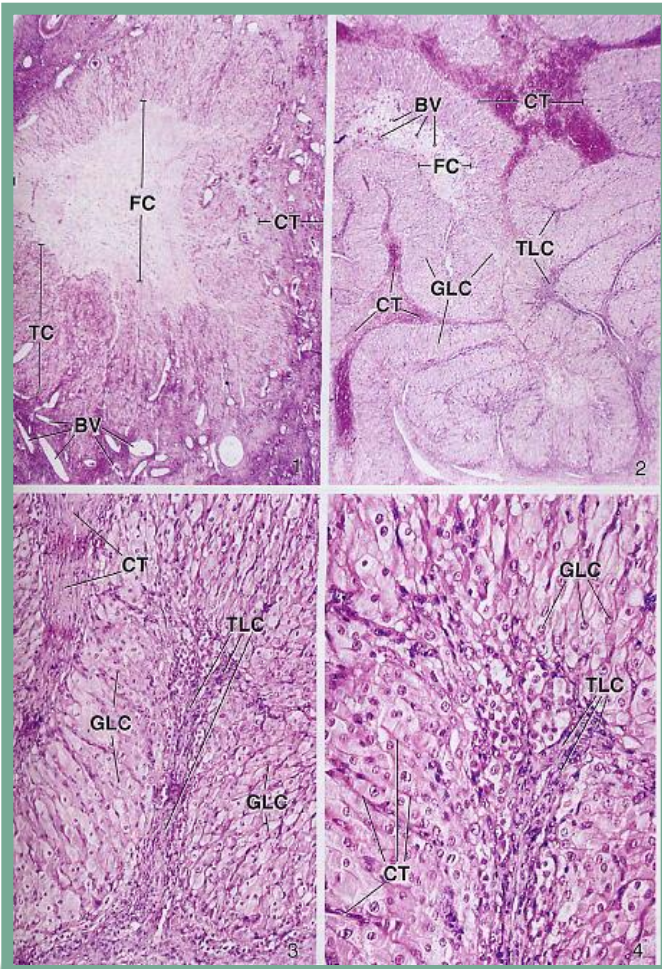


Secondary Oocyte

# Korpus luteum



# Corpus luteum



# Tuba uterina

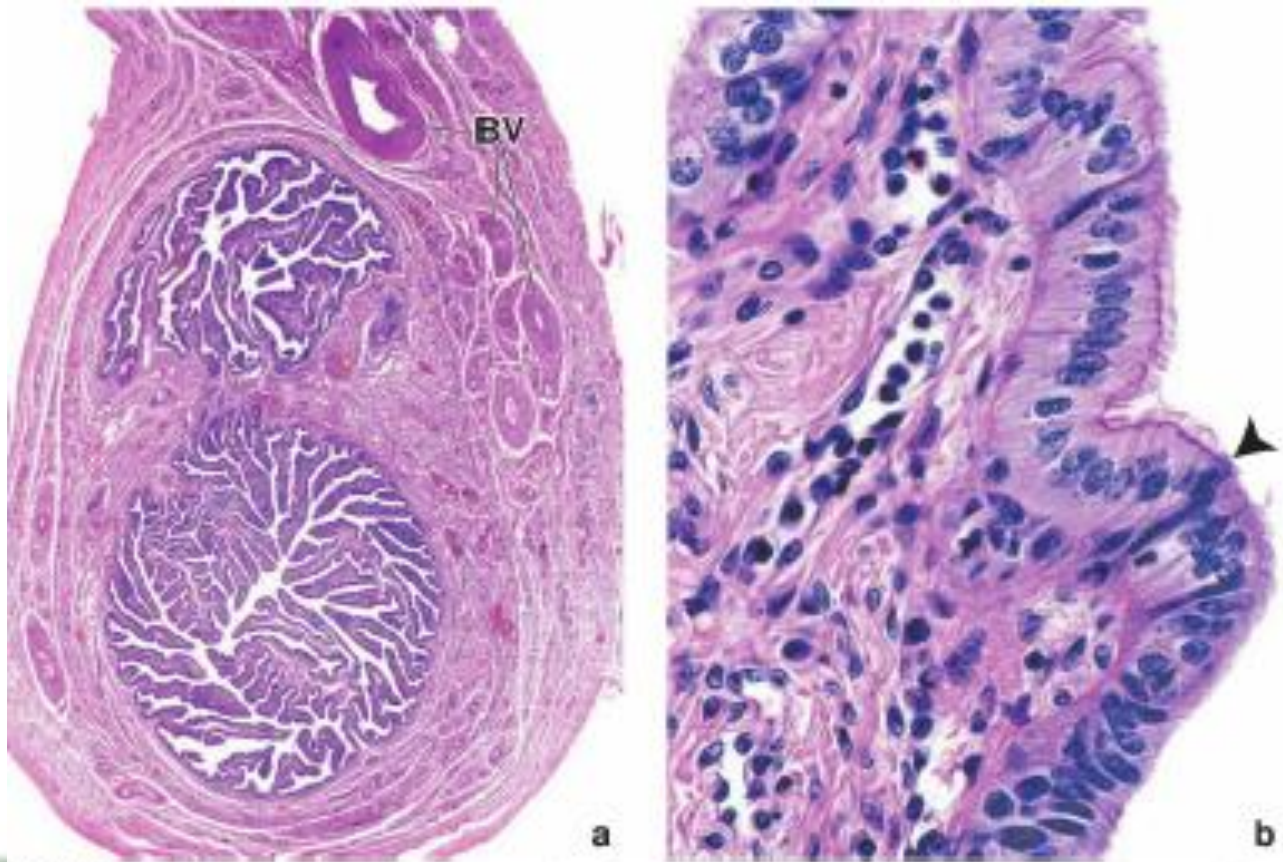
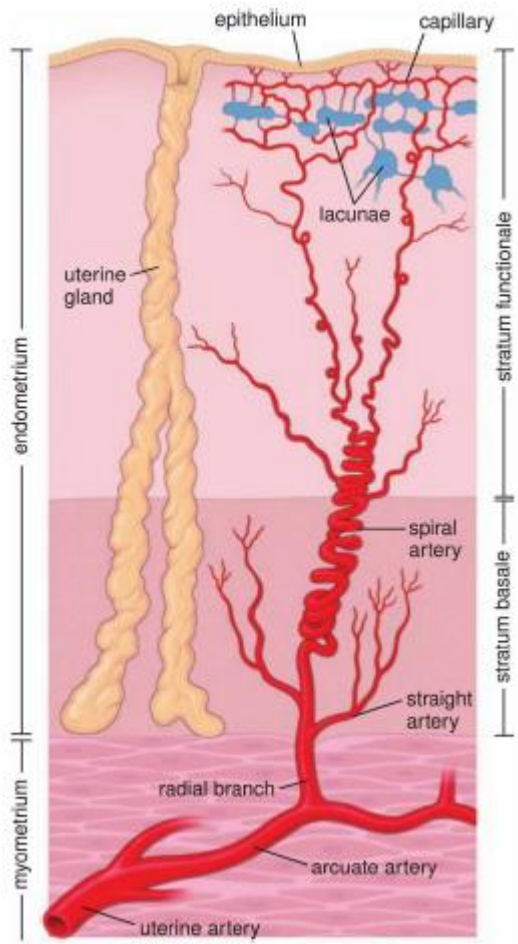
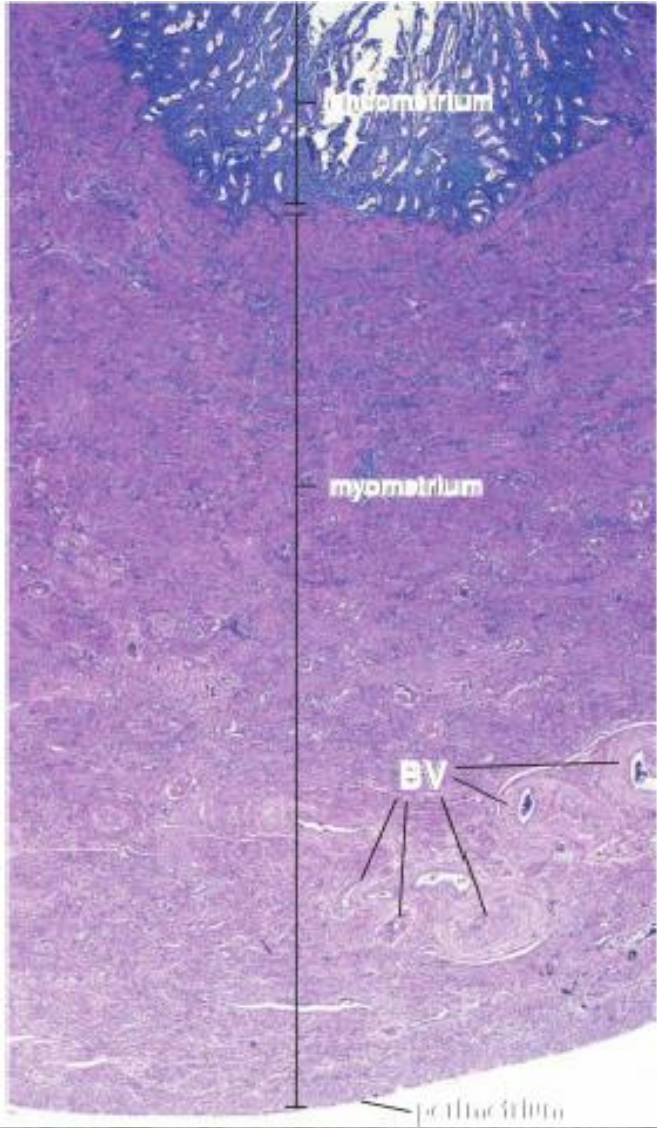
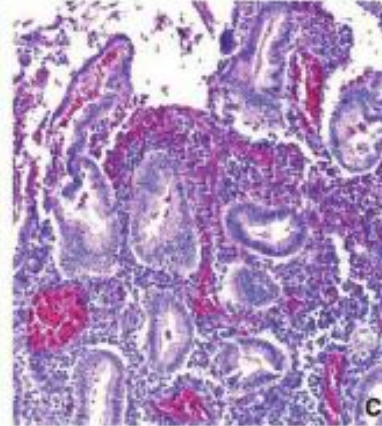
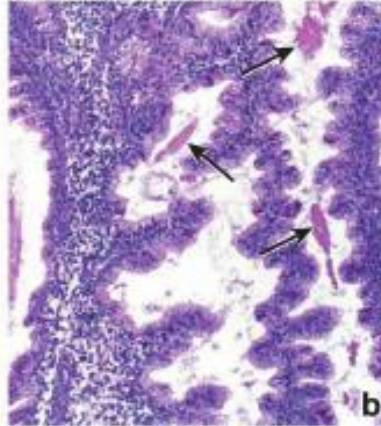
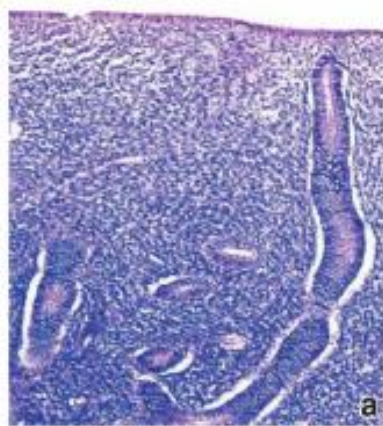
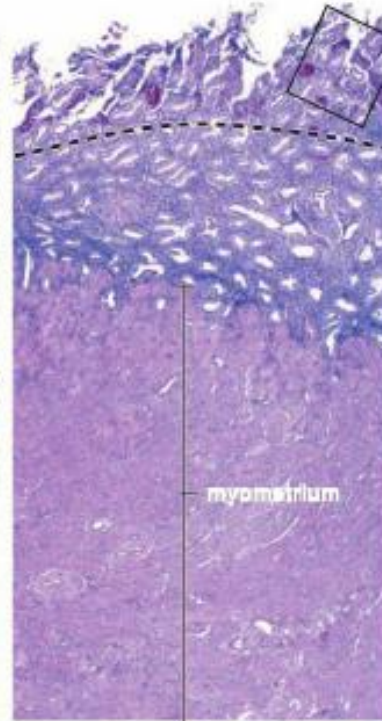
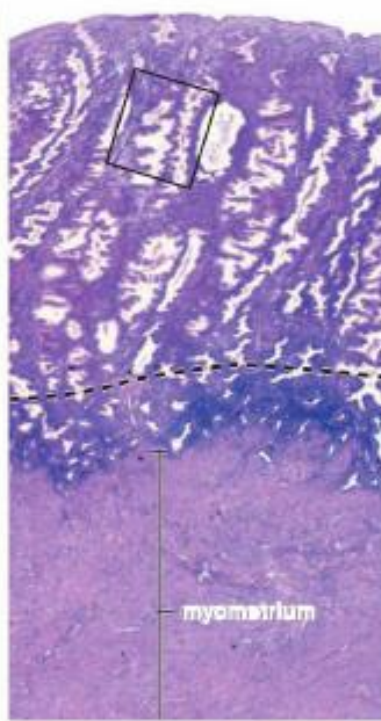
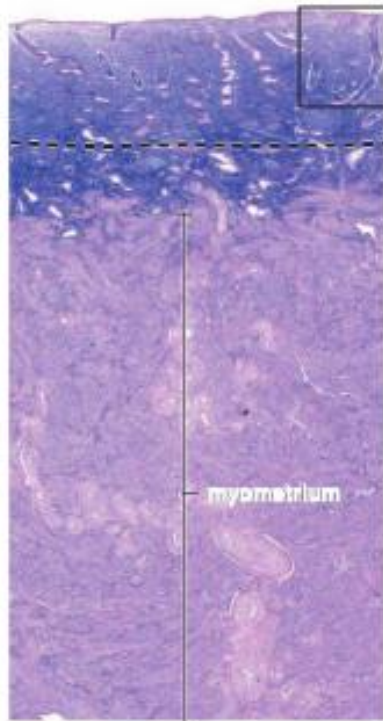


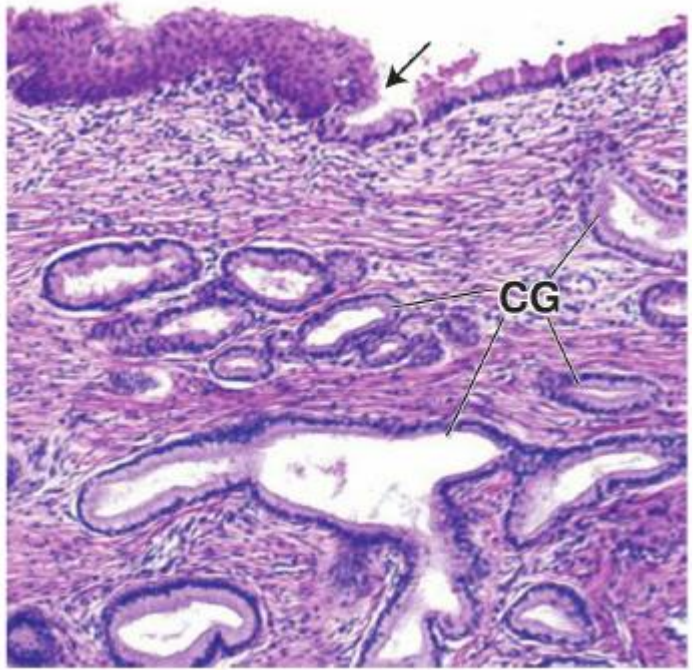
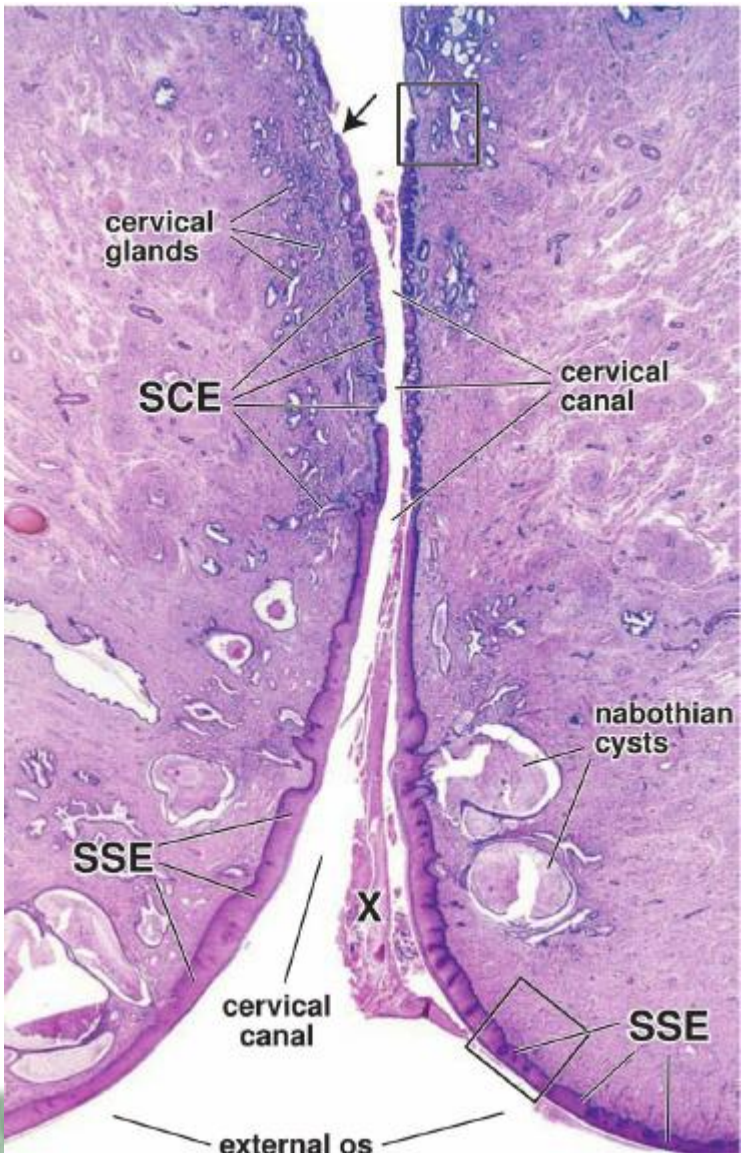
FIGURE 28-14 The uterine tube (oviduct) is a muscular tube that carries the egg from the ovary to the uterus.

# Uterus



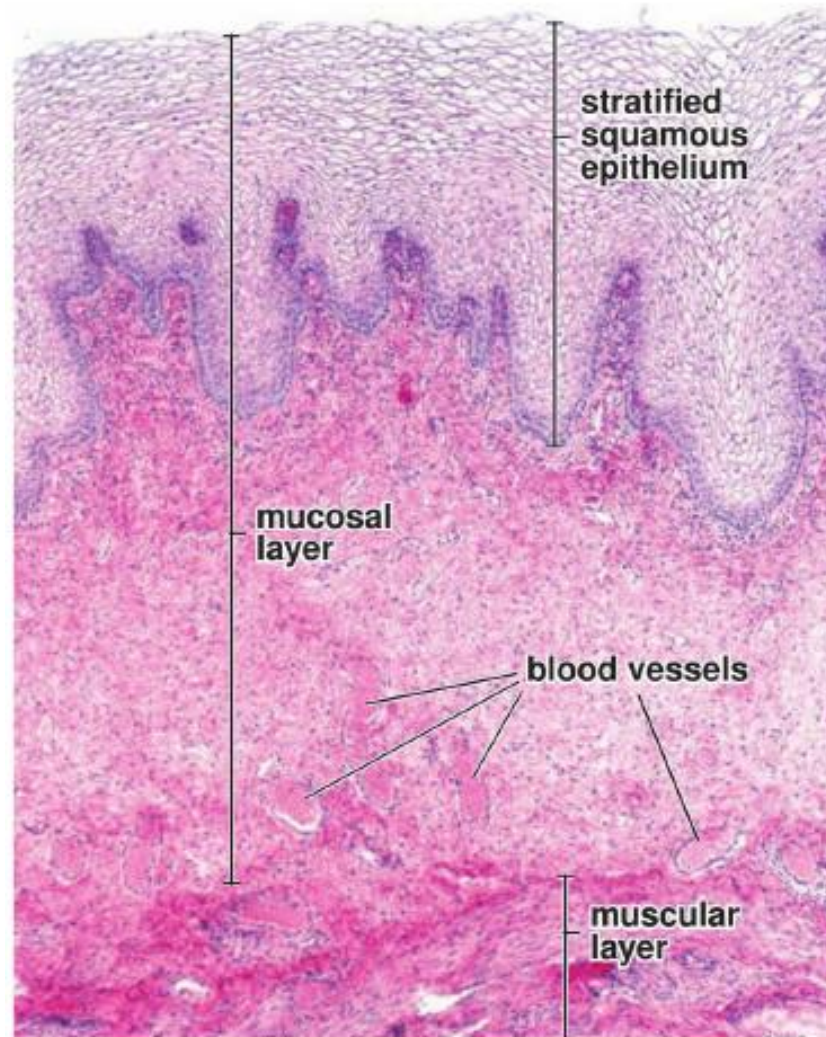


# Serviks





# Vajen



Başarılar...